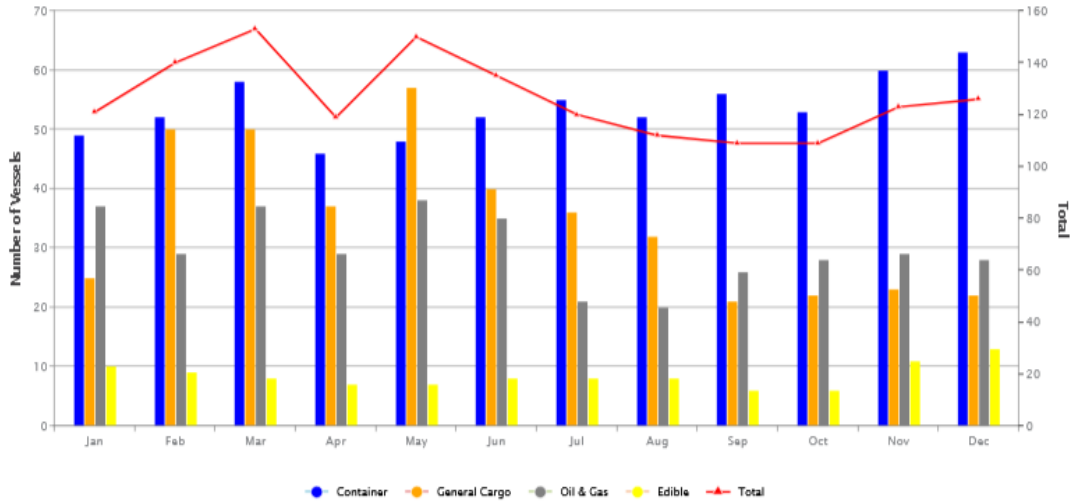


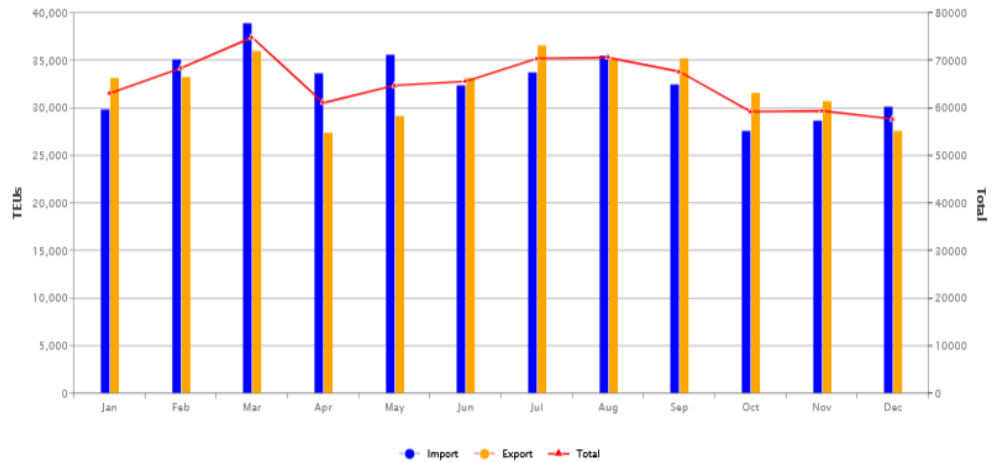
# Annual Trade Overview 2024

## Vessel Calls



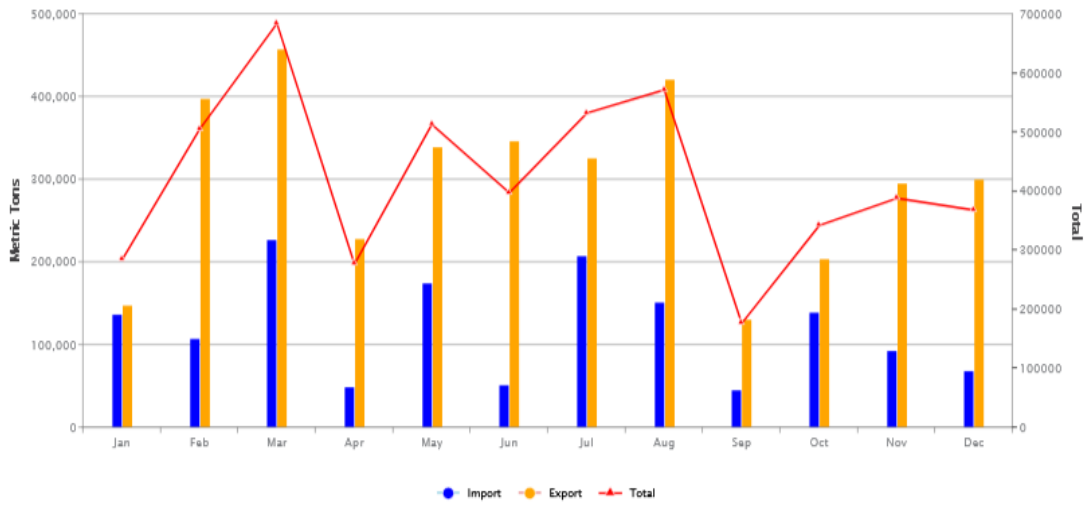
	Jan	Feb	Mar	Apr	May	Jun	Jul	Aug	Sep	Oct	Nov	Dec
<b>Container</b>	49	52	58	46	48	52	55	52	56	53	60	63
<b>General Cargo</b>	25	50	50	37	57	40	36	32	21	22	23	22
<b>Oil &amp; Gas</b>	37	29	37	29	38	35	21	20	26	28	29	28
<b>Edible</b>	10	9	8	7	7	8	8	8	6	6	11	13
<b>Total</b>	121	140	153	119	150	135	120	112	109	109	123	126

## Container Handling Volume(TEUs)



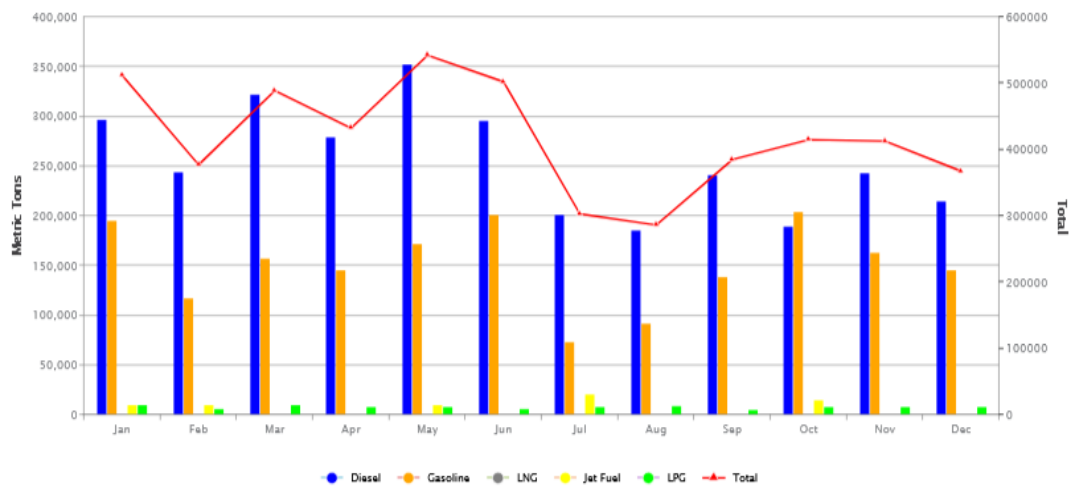
	Jan	Feb	Mar	Apr	May	Jun	Jul	Aug	Sep	Oct	Nov	Dec
<b>Import</b>	29,894	35,129	38,895	33,683	35,579	32,393	33,792	35,544	32,447	27,610	28,672	30,108
<b>Export</b>	33,215	33,258	35,984	27,409	29,185	33,206	36,633	35,080	35,229	31,648	30,750	27,608
<b>Total</b>	63,109	68,387	74,879	61,092	64,764	65,599	70,425	70,624	67,676	59,258	59,422	57,716

## General Cargo Handling Volume(Metric Tons)



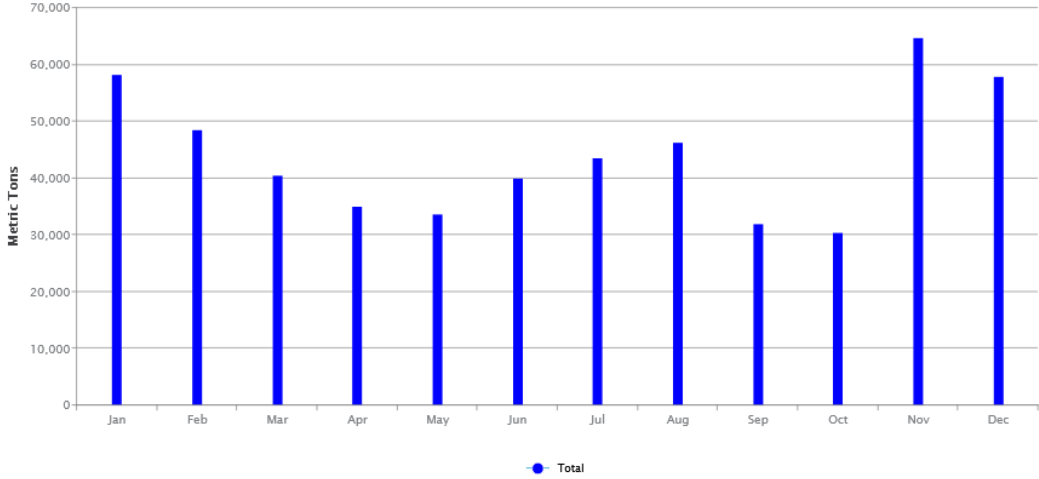
	Jan	Feb	Mar	Apr	May	Jun	Jul	Aug	Sep	Oct	Nov	Dec
<b>Import</b>	136,552	107,236	226,490	48,640	174,607	50,902	206,796	150,879	45,500	138,733	92,603	68,208
<b>Export</b>	147,768	397,582	457,706	228,206	338,787	346,672	325,642	420,949	131,001	203,306	295,681	300,085
<b>Total</b>	284,320	504,818	684,196	276,846	513,394	397,574	532,438	571,828	176,501	342,039	388,284	368,293

## Oil & Gas (Metric Tons)



	Jan	Feb	Mar	Apr	May	Jun	Jul	Aug	Sep	Oct	Nov	Dec
<b>Diesel</b>	296,838	243,828	322,206	278,759	352,217	295,163	201,247	185,179	241,053	189,129	242,748	215,115
<b>Gasoline</b>	194,943	117,357	156,772	145,659	172,194	201,123	73,458	92,103	138,876	203,787	162,638	144,920
<b>LNG</b>	-	-	-	-	-	-	-	-	-	-	-	-
<b>Jet Fuel</b>	10,153	10,090	-	-	9,918	-	20,053	-	-	14,348	-	-
<b>LPG</b>	10,002	6,002	10,002	8,001	8,000	6,002	8,292	9,092	5,250	7,752	7,501	7,502
<b>Total</b>	511,936	377,277	488,980	432,419	542,329	502,288	303,050	286,374	385,179	415,016	412,887	367,537

# Edible Oil(Metric Tons)



	Jan	Feb	Mar	Apr	May	Jun	Jul	Aug	Sep	Oct	Nov	Dec
Total	58,299	48,498	40,549	34,949	33,697	39,945	43,549	46,303	31,884	30,420	64,668	57,826