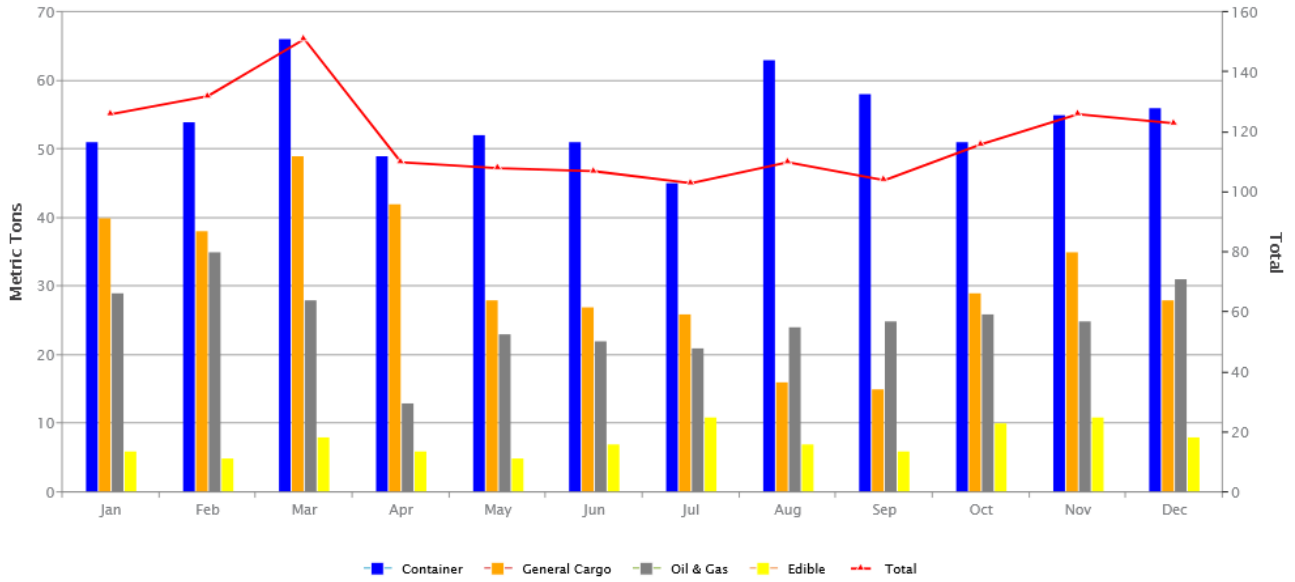


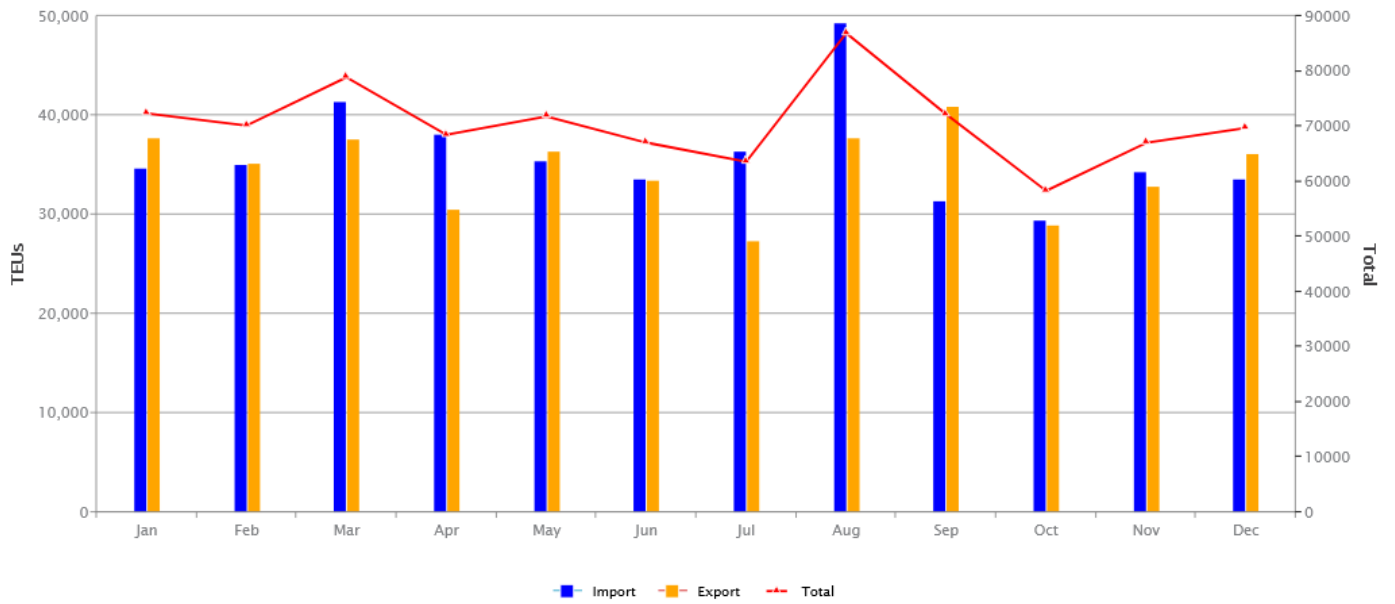
# Annual Trade Overview 2022

## Vessel Calls



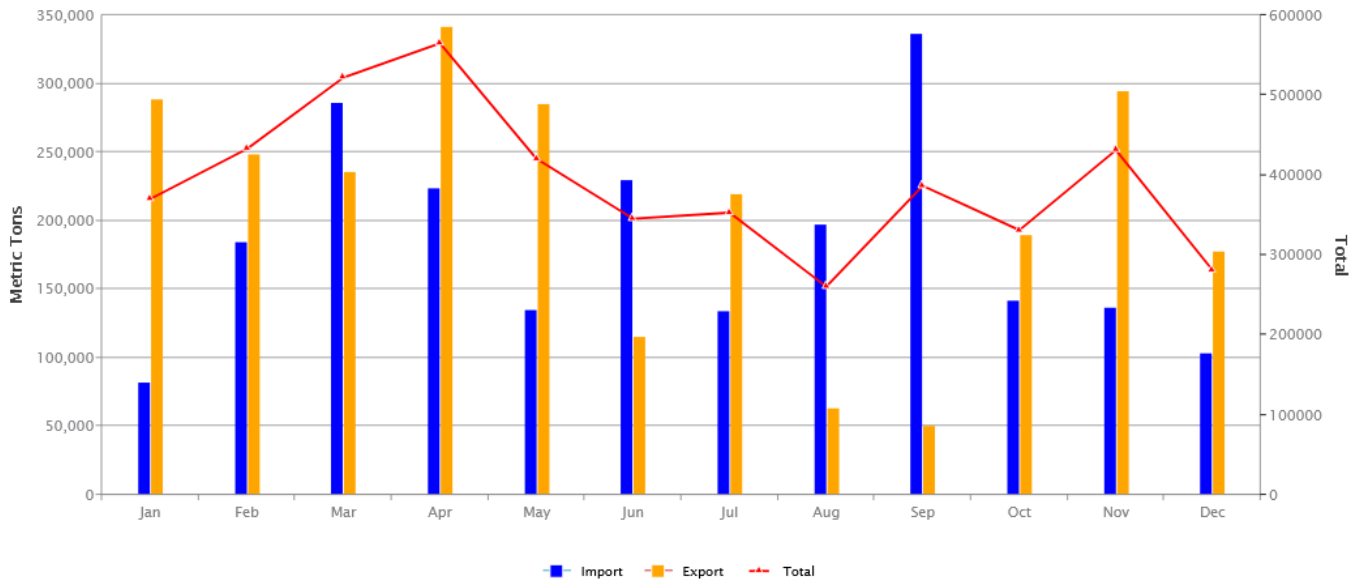
	Jan	Feb	Mar	Apr	May	Jun	Jul	Aug	Sep	Oct	Nov	Dec
<b>Container</b>	51	54	66	49	52	51	45	63	58	51	55	56
<b>General Cargo</b>	40	38	49	42	28	27	26	16	15	29	35	28
<b>Oil &amp; Gas</b>	29	35	28	13	23	22	21	24	25	26	25	31
<b>Edible</b>	6	5	8	6	5	7	11	7	6	10	11	8
<b>Total</b>	126	132	151	110	108	107	103	110	104	116	126	123

## Container Handling Volume (TEUs)



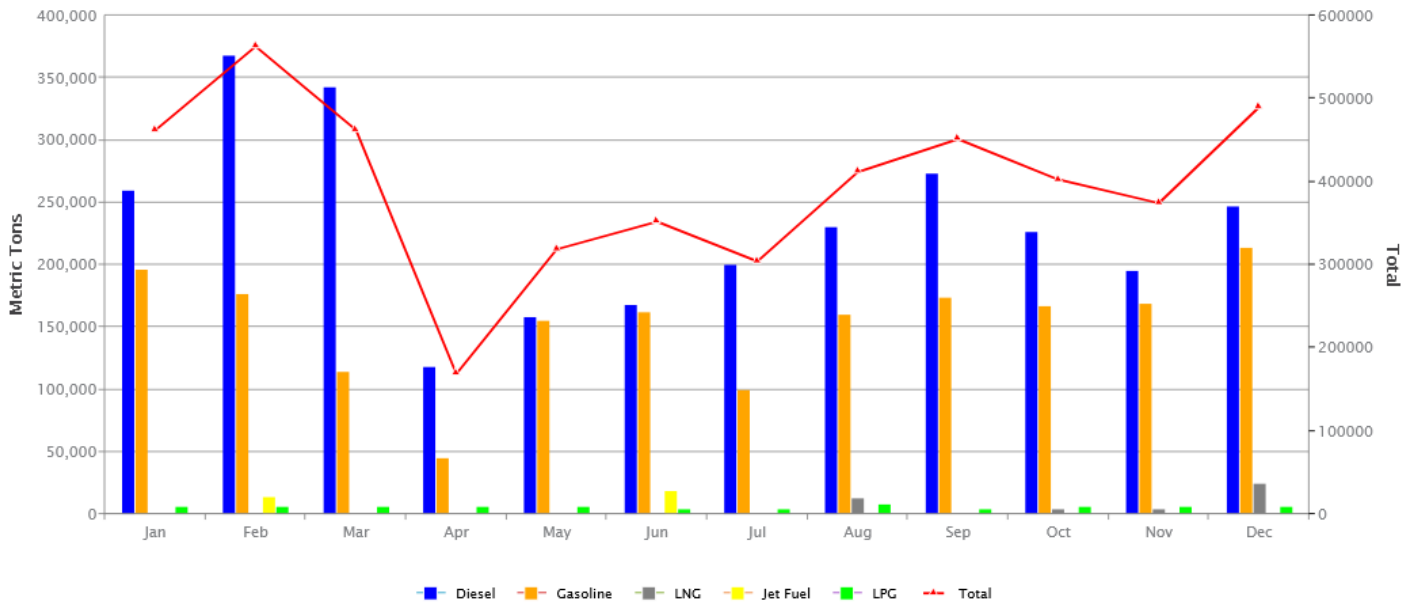
	Jan	Feb	Mar	Apr	May	Jun	Jul	Aug	Sep	Oct	Nov	Dec
<b>Import</b>	34,666	35,038	41,293	38,002	35,403	33,574	36,292	49,239	31,303	29,441	34,236	33,578
<b>Export</b>	37,665	35,120	37,600	30,475	36,382	33,474	27,323	37,656	40,902	28,873	32,767	36,124
<b>Total</b>	72,331	70,158	78,893	68,477	71,785	67,048	63,615	86,895	72,205	58,314	67,003	69,702

## General Cargo Handling Volume (Metric Tons)



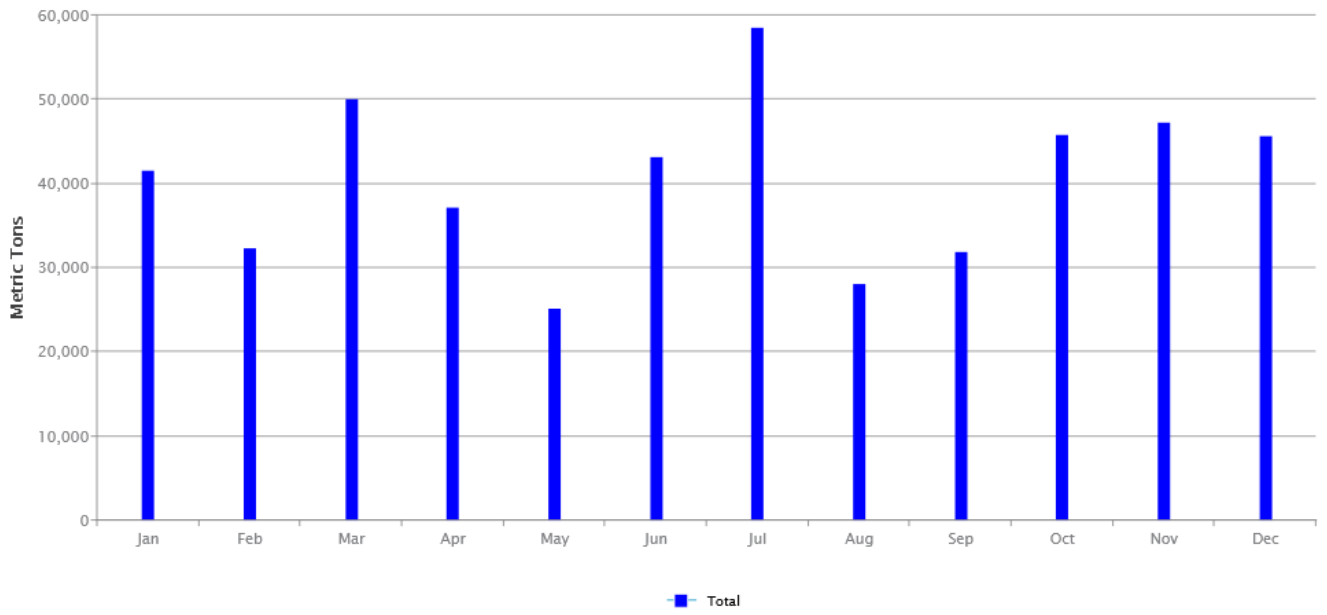
	Jan	Feb	Mar	Apr	May	Jun	Jul	Aug	Sep	Oct	Nov	Dec
<b>Import</b>	81,722	184,310	285,954	223,252	135,085	230,053	133,749	197,593	336,047	141,672	136,756	103,441
<b>Export</b>	288,593	248,490	235,996	341,628	285,264	115,350	219,256	62,875	50,515	189,428	294,498	177,680
<b>Total</b>	370,315	432,800	521,950	564,880	420,349	345,403	353,005	260,468	386,562	331,100	431,254	281,121

## Oil and Gas (Metric Tons)



	Jan	Feb	Mar	Apr	May	Jun	Jul	Aug	Sep	Oct	Nov	Dec
<b>Diesel</b>	259,537	367,551	342,080	117,897	157,608	167,606	200,359	230,494	273,568	226,092	195,294	246,416
<b>Gasoline</b>	196,429	176,185	114,132	44,876	155,107	162,187	99,825	159,987	173,794	166,498	169,090	213,335
<b>LNG</b>	-	-	-	-	-	-	-	13,124	-	3,902	3,890	24,152
<b>Jet Fuel</b>	-	13,311	-	-	-	18,267	-	-	-	-	-	-
<b>LPG</b>	6,003	5,769	6,001	6,004	6,001	4,001	3,940	7,940	4,001	6,004	6,000	6,003
<b>Total</b>	461,969	562,816	462,213	168,777	318,716	352,061	304,124	411,545	451,363	402,496	374,274	489,906

## Edible Oil (Metric Tons)



	Jan	Feb	Mar	Apr	May	Jun	Jul	Aug	Sep	Oct	Nov	Dec
Total	41,541	32,337	50,021	37,200	25,200	43,196	58,609	28,122	31,973	45,878	47,215	45,706